



### ANSI B18.2.2 Hex Nut

Leader-Fastener is a manufacturer and distributor of **ANSI B18.2.2 Hex Nut**. We have a complete line of service from having invested in production plants, export department and to having a quality control team and center to meet your requirements. We regard quality as the life of the company. We persist in good quality as the first policy and have established a set of quality control and inspection system according to the international standard. We have carried out ISO9001 Quality Guarantee System in every course of production, transportation and selling. We do hope we could be your partner in business by topping quality, knight service and

competitive price in the near future and be your friends as well.

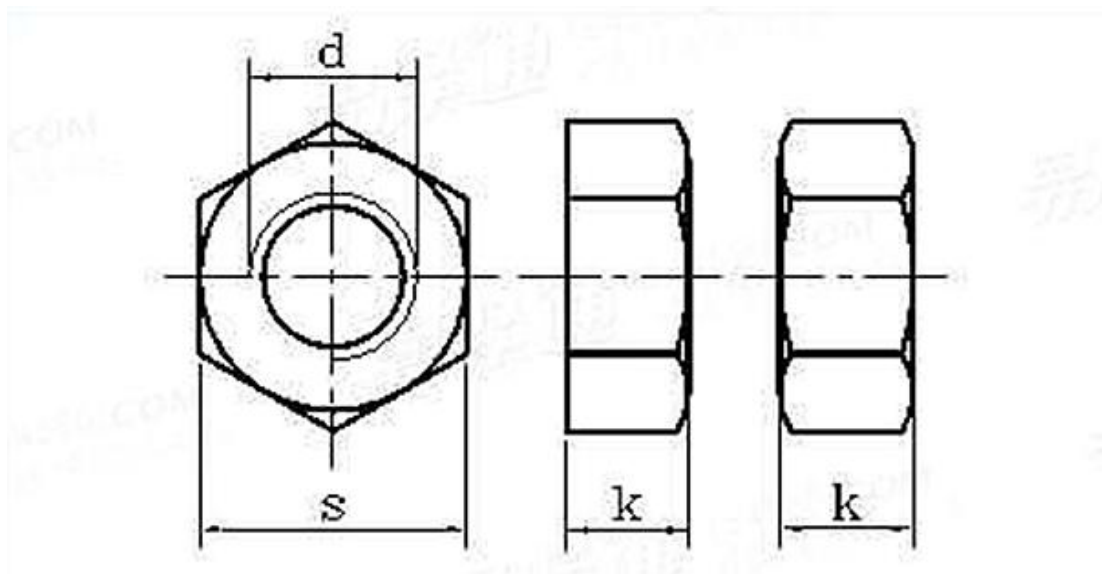
**ANSI B18.2.2 Hex Nut** used to fasten bolts and screws. Hex nuts are often used with hex head bolts. However, its use is not limited to hex head bolts. The hexagonal body makes it easy to wrench while applying enough torque to the bolted connection. Hex nuts can be used with all kinds of bolts.

### Product Specification of ANSI B18.2.2 Hex Nut

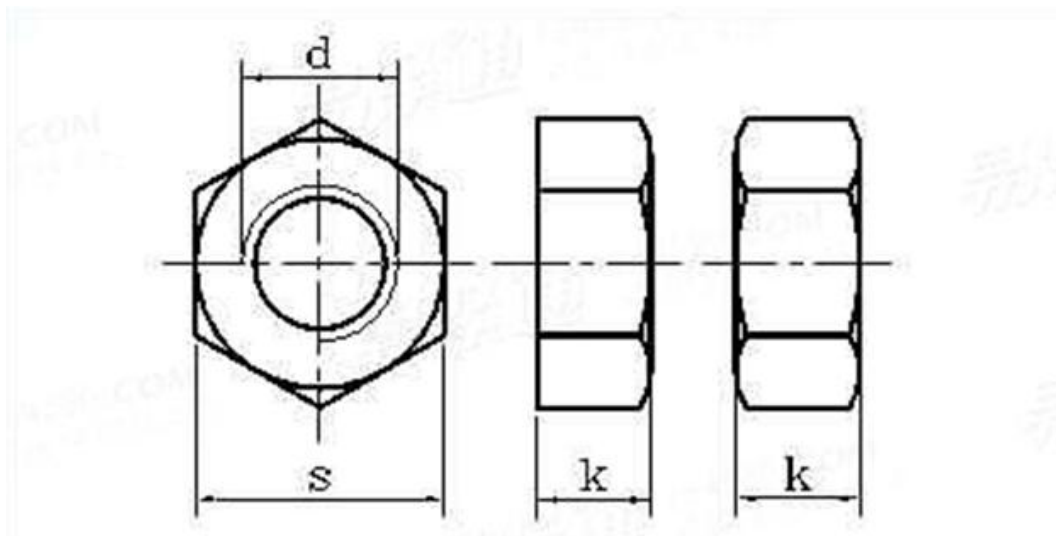
Material : Carbon steel, Stainless steel, Alloy Steel, Brass.

Finishment: Black, Zinc Plated, Zinc Yellow, HDG, Phosphate, DACROMET, Geomet, Magin, Ruspert, Teflon, etc.

### ANSI/ASME B 18.2.2 - 2010 Hex Machine Screw Nuts [Table1-1]

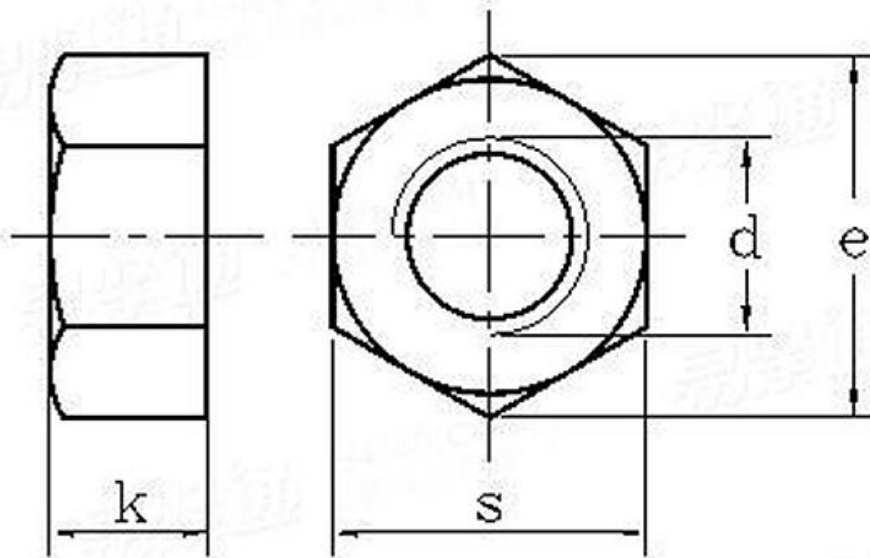


d	s		k	
	max	min	max	min
#0	0.156	0.15	0.05	0.043
#1	0.156	0.15	0.05	0.043
#2	0.188	0.18	0.066	0.057
#3	0.188	0.18	0.066	0.057
#4	0.25	0.241	0.098	0.087
#5	0.312	0.302	0.114	0.102
#6	0.312	0.302	0.114	0.102
#8	0.344	0.332	0.13	0.117
#10	0.375	0.362	0.13	0.117
#12	0.438	0.423	0.161	0.148
1/4	0.438	0.423	0.193	0.178
5/16	0.562	0.545	0.225	0.208
3/8	0.625	0.607	0.257	0.239

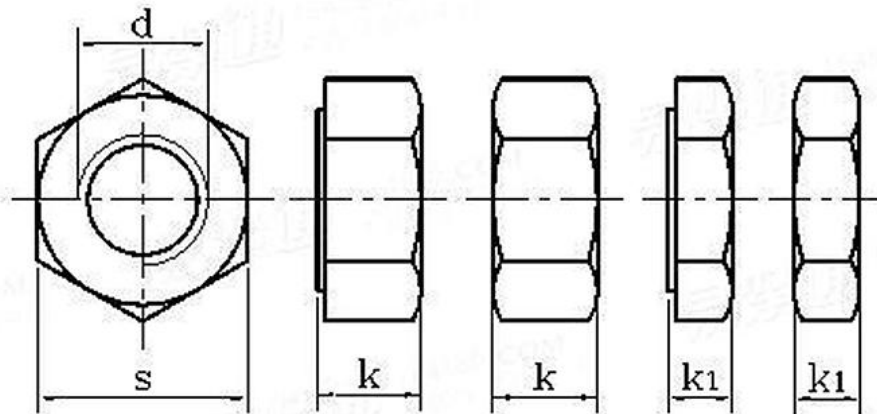
**ANSI/ASME B 18.2.2 - 2010 Small Pattern Hex Machine Screw Nuts [Table 1-2]**


d	s		k	
	max	min	max	min
#0	0.125	0.121	0.05	0.043
#1	0.125	0.121	0.05	0.043
#2	0.156	0.15	0.066	0.057

#3	0.156	0.15	0.066	0.057
#4	0.188	0.18	0.098	0.087
#5	0.25	0.241	0.114	0.102
#6	0.312	0.302	0.114	0.102
#8	0.344	0.332	0.13	0.117
#10	0.375	0.362	0.13	0.117

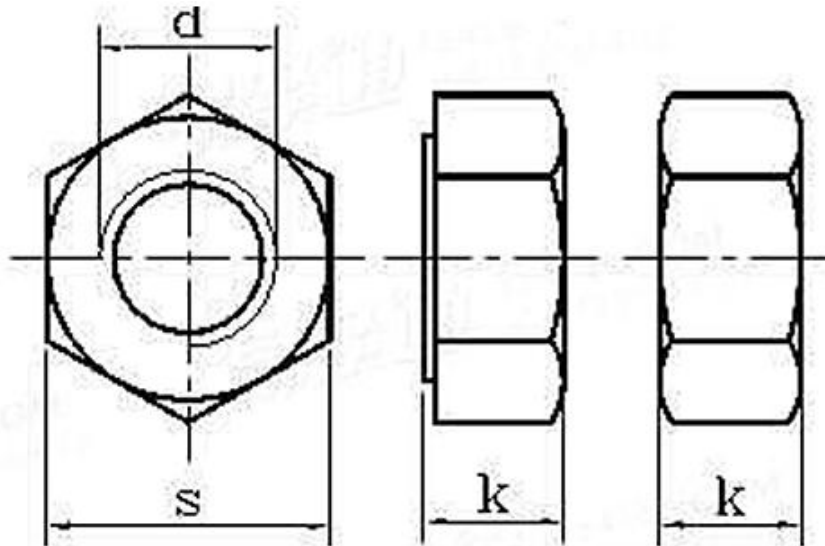
**ANSI/ASME B 18.2.2 - 2010 Hex Flat Nuts [Table 3]**


d	s		e		k	
	max	min	max	min	max	min
1-1/8	1.688	1.631	1.949	1.859	1.03	0.97
1-1/4	1.875	1.812	2.165	2.066	1.126	1.062
1-3/8	2.062	1.994	2.382	2.273	1.237	1.169
1-1/2	2.250	2.175	2.598	2.480	1.348	1.276

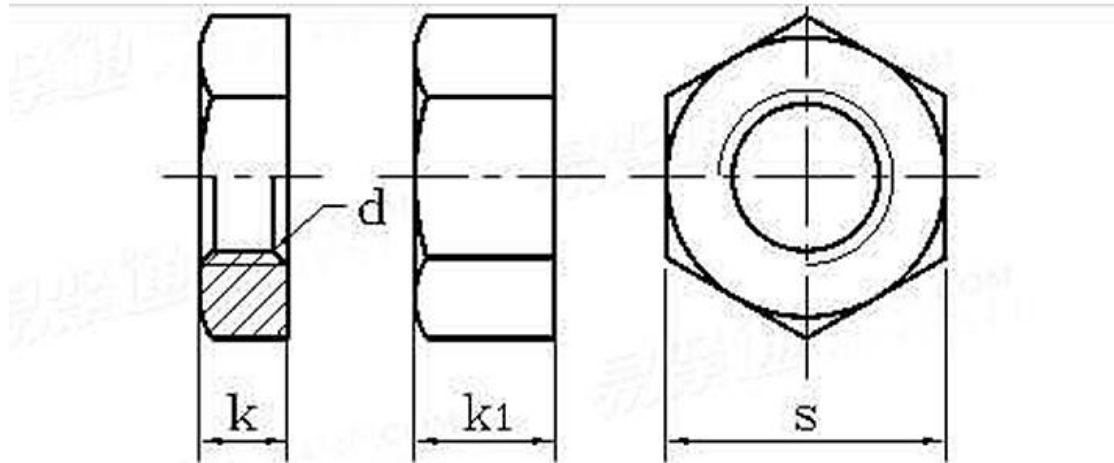
**ANSI/ASME B 18.2.2 - 2010 Hex Nuts and Hex Jam Nuts [Table 4]**


d	s		k		k1	
	max	min	max	min	max	min
1/4	0.438	0.428	0.226	0.212	0.163	0.15
5/16	0.500	0.489	0.273	0.258	0.195	0.18
3/8	0.563	0.551	0.337	0.320	0.227	0.21
7/16	0.688	0.675	0.385	0.365	0.26	0.24
1/2	0.750	0.736	0.448	0.427	0.323	0.301
9/16	0.875	0.861	0.496	0.473	0.324	0.302
5/8	0.938	0.922	0.559	0.535	0.387	0.363
3/4	1.125	1.088	0.665	0.617	0.446	0.398
7/8	1.312	1.269	0.776	0.724	0.51	0.458
1	1.500	1.450	0.887	0.8321	0.575	0.519
1-1/8	1.688	1.631	0.999	0.939	0.639	0.579
1-1/4	1.875	1.812	1.094	1.030	0.751	0.687
1-3/8	2.062	1.994	1.206	1.138	0.815	0.747
1-1/2	2.25	2.175	1.317	1.245	0.88	0.808
1-5/8	2.43	2.35	1.416	1.364	0.944	0.868
1-3/4	2.625	2.538	1.54	1.46	1.009	0.929
1-7/8	2.813	2.722	1.651	1.567	1.073	0.989
2	3	2.9	1.763	1.675	1.138	1.05
2-1/4	3.375	3.263	1.986	1.89	1.267	1.155
2-1/2	3.75	3.625	2.209	2.105	1.427	1.401
2-3/4	4.125	3.988	2.431	2.319	1.556	1.522
3	4.5	4.35	2.654	2.534	1.685	1.643

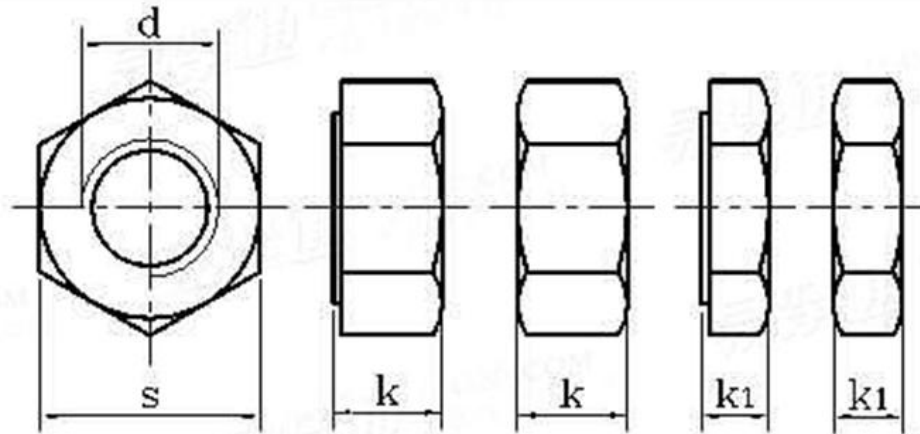
3-1/4	4.875	4.713	2.844	2.749	1.814	1.748
3-1/2	5.25	5.075	3.1	2.964	1.943	1.87
3-3/4	5.625	5.438	3.322	3.178	2.072	1.99
4	6	5.8	3.545	3.393	2.201	2.112

**ANSI/ASME B 18.2.2 - 2010 Hex Thick Nuts [table6]**


d	s		k	
	max	min	max	min
1/4	0.438	0.428	0.288	0.274
5/16	0.500	0.489	0.336	0.320
3/8	0.562	0.551	0.415	0.398
7/16	0.688	0.675	0.463	0.444
1/2	0.750	0.736	0.573	0.552
9/16	0.875	0.861	0.621	0.598
5/8	0.938	0.922	0.731	0.706
3/4	1.125	1.088	0.827	0.798
7/8	1.312	1.269	0.922	0.890
1	1.500	1.450	1.018	0.982
1-1/8	1.688	1.631	1.176	1.136
1-1/4	1.875	1.812	1.272	1.228
1-3/8	2.062	1.994	1.399	1.351
1-1/2	2.250	2.175	1.526	1.474

**ANSI/ASME B 18.2.2 - 2010 Heavy Hex Flat Nuts and Heavy Hex Flat Jam Nuts [Table 9]**


	Nominal	max	min	Nominal	max	min	Nominal	max	min
1-1/8	1-13/16	1.812	1.756	1-1/8	1.155	1.079	5/8	0.655	0.579
1-1/4	2	2.000	1.938	1-1/4	1.282	1.187	3/4	0.782	0.687
1-3/8	2-3/16	2.188	2.119	1-3/8	1.409	1.310	13/16	0.846	0.747
1-1/2	2-3/8	2.375	2.300	1-1/2	1.536	1.433	7/8	0.911	0.808
1-3/4	2-3/4	2.750	2.662	1-3/4	1.790	1.679	1	1.04	0.929
2	3-1/8	3.125	3.025	2	2.044	1.925	1-1/8	1.169	1.05
2-1/4	3-1/2	3.500	3.388	2-1/4	2.298	2.155	1-1/4	1.298	1.155
2-1/2	3-7/8	3.875	3.750	2-1/2	2.552	2.401	1-1/2	1.552	1.401
2-3/4	4-1/4	4.250	4.112	2-3/4	2.806	2.647	1-5/8	1.681	1.522
3	4-5/8	4.625	4.475	3	3.060	2.893	1-3/4	1.81	1.643
3-1/4	5	5.000	4.838	3-1/4	3.314	3.124	1-7/8	1.939	1.748
3-1/2	5-3/8	5.375	5.200	3-1/2	3.568	3.370	2	2.068	1.87
3-3/4	5-3/4	5.750	5.562	3-3/4	3.822	3.616	2-1/8	2.197	1.99
4	6-1/8	6.125	5.925	4	4.076	3.862	2-1/4	2.326	2.112

**ANSI/ASME B 18.2.2 - 2010 Heavy Hex Nuts and Heavy Hex Jam Nuts [Table 10]**


d	s		k		k1	
	max	min	max	min	max	min
1/4	0.5	0.488	0.25	0.218	0.188	0.156
5/16	0.562	0.546	0.314	0.28	0.22	0.186
3/8	0.688	0.669	0.377	0.341	0.252	0.216
7/16	0.75	0.728	0.441	0.403	0.285	0.247
1/2	0.875	0.85	0.504	0.464	0.317	0.277
9/16	0.938	0.909	0.568	0.526	0.349	0.307
5/8	1.062	1.031	0.631	0.587	0.381	0.337
3/4	1.25	1.212	0.758	0.71	0.446	0.398
7/8	1.438	1.394	0.885	0.833	0.51	0.458
1	1.625	1.575	1.012	0.956	0.575	0.519
1-1/8	1.812	1.756	1.139	1.079	0.639	0.579
1-1/4	2	1.938	1.251	1.187	0.751	0.687
1-3/8	2.188	2.119	1.378	1.31	0.815	0.747
1-1/2	2.375	2.3	1.505	1.433	0.88	0.808
1-5/8	2.562	2.481	1.632	1.556	0.944	0.868
1-3/4	2.75	2.662	1.759	1.679	1.009	0.929
1-7/8	2.938	2.844	1.886	1.802	1.073	0.989
2	3.125	3.025	2.013	1.925	1.138	1.05
2-1/4	3.5	3.388	2.251	2.155	1.251	1.155
2-1/2	3.875	3.75	2.505	2.401	1.505	1.401
2-3/4	4.25	4.112	2.759	2.647	1.634	1.522

3	4.625	4.475	3.013	2.893	1.763	1.643
3-1/4	5	4.838	3.252	3.124	1.876	1.748
3-1/2	5.375	5.2	3.506	3.37	2.006	1.87
3-3/4	5.75	5.562	3.76	3.616	2.134	1.99
4	6.125	5.925	4.014	3.862	2.264	2.112